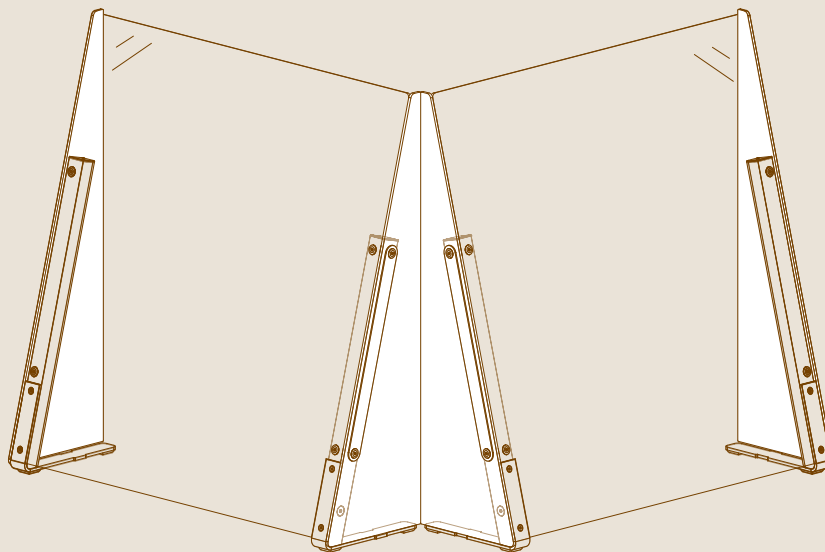


V·Shield

SYSTEM

ACRYLIC CORNER PANELS FOR WIDE | NARROW SHIELD

ASSEMBLY INSTRUCTIONS



ATTENTION!



Clean acrylic panels with warm water and mild soap and rinse thoroughly with water. Dry with soft cloth to prevent water spots. You can also clean and polish with cleaners made specifically for acrylic, like Novus #1 or Brilliance.



Dry with a soft sponge to prevent water spots.

- ✗ Never use abrasive or highly alkaline cleansers.
- ✗ Never scrape with razor blades or other sharp instruments.
- ✗ Never use benzene, acetone, or carbon tetrachloride.
- ✗ Never use cleaners such as Windex or 409.

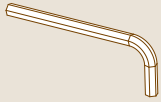
PARTS

X4



SCREWS

X1



ALLEN KEY FOR M6

X2



CORNER PANELS
L35.7" W10" | L89cm W26cm

X2

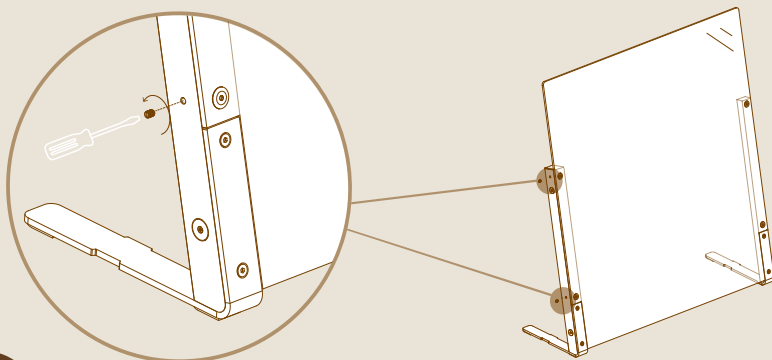


PRESSURE DECREASE METAL SHEET

ASSEMBLY

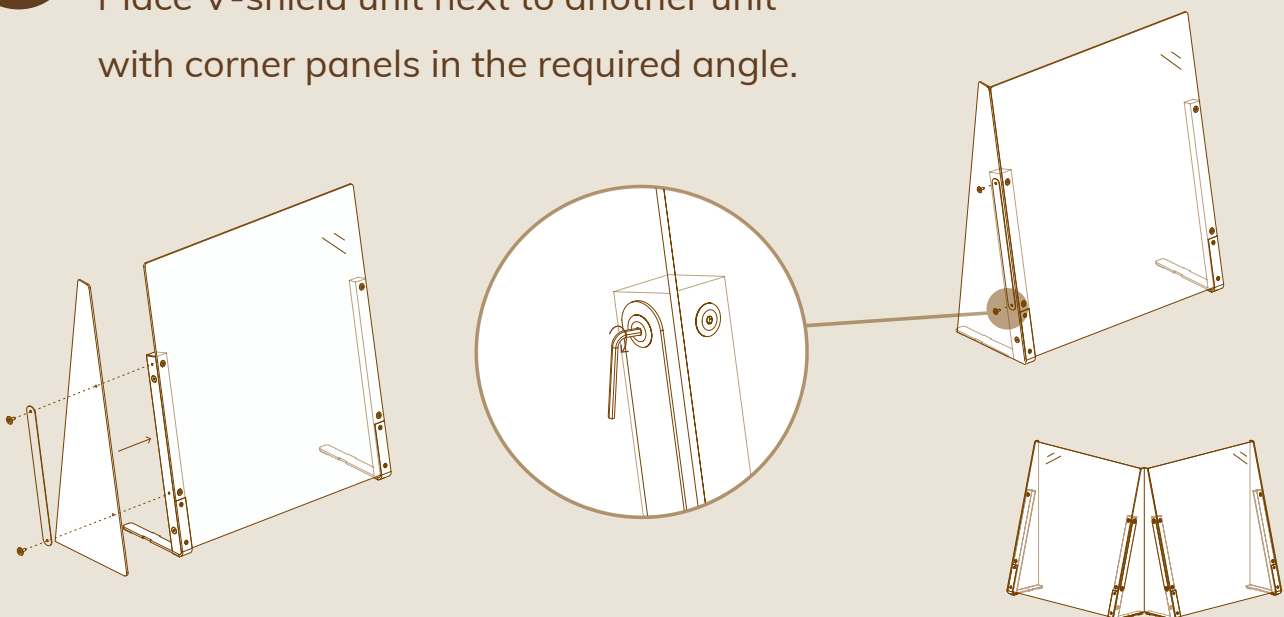
1

Unscrew two side screws using a flat head screwdriver.
Unscrew guide screw if it is assembled.



2

Place V-shield unit next to another unit
with corner panels in the required angle.



GREAT JOB, YOUR GOOD TO GO!